

STONE

MASONARY



Terms in stone Masonry

1. COURSE
2. HEADER
3. STRETCHER
4. HEADER COURSE
5. STRETCHER COURSE
6. FACE
7. BACK
8. SIDE
9. JOINT
10. BED JOINT



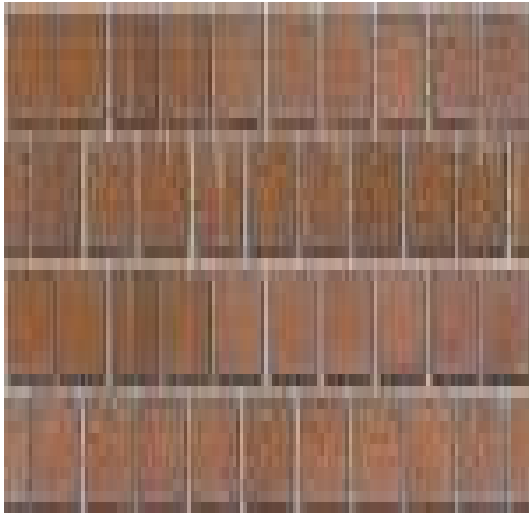
COURSE

IT IS HORIZONTAL LAYER OF MASONARY UNIT.
THE THICKNESS OF COURSE WILL BE EQUAL
TO HORIZONTAL OF STONE PLUS THICKNESS
OF MORTER JOINT



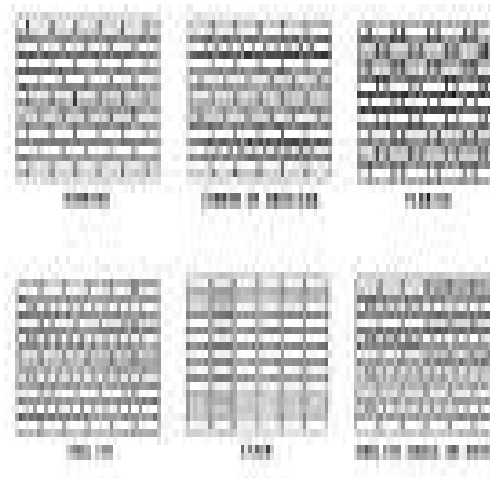
HEADER

IT IS FULL STONE UNIT OR BRICK WHICH IS SO LAID THAT IT'S LENGTH IS PERPENDICULAR TO LENGTH OF WALL.



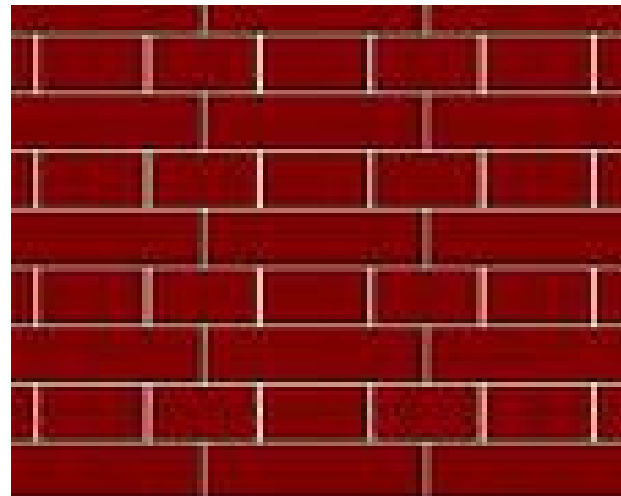
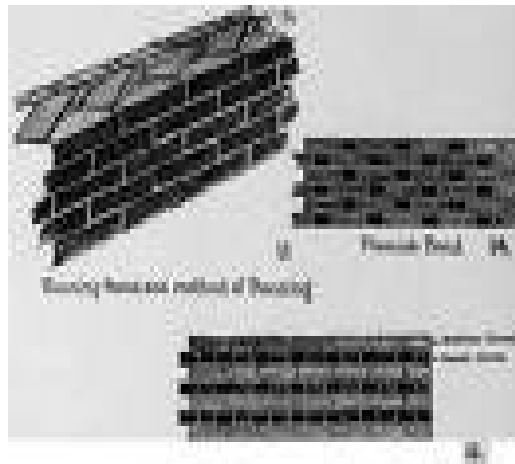
STRETCHER

IT IS A FULL STONE UNIT WHICH IS SO LAID THAT IT'S LENGTH IS PARALLEL TO LENGTH OF WALL



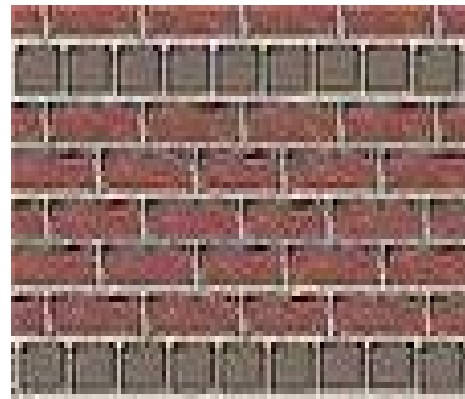
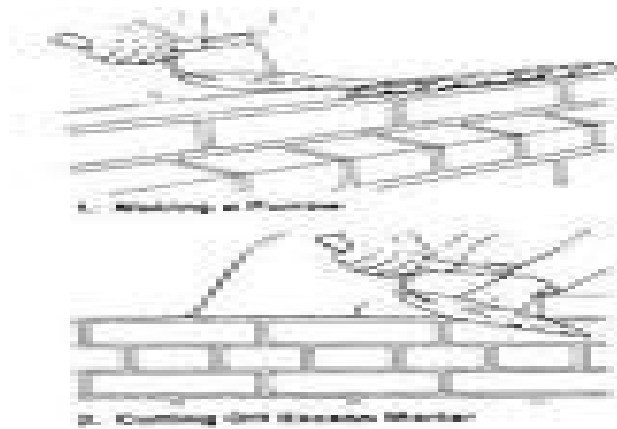
HEADER COURSE

COURSE OF BRICK WORK SHOWING ONLY HEADERS ON EXPOSED FACE OF WALL IS KNOWN AS HEADER COURSE.



Stretcher course

SHOWING ONLY STRETCHER ON EXPOSED FACE OF WALL.



FACE

IT IS SURFACE OF WALL EXPOSED TO THE SURFACE.



BACK

THE INNER SURFACE WALL IS NOT EXPOSED TO WEATHER



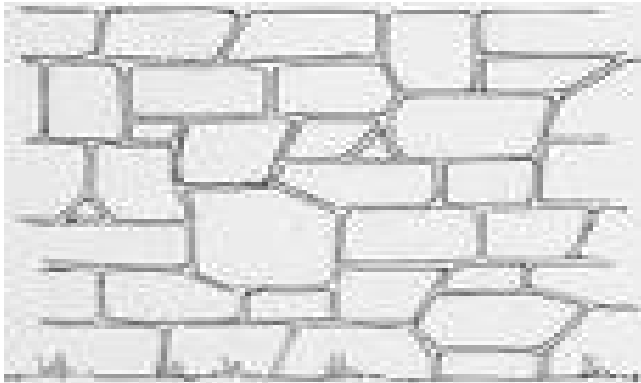
SIDE

IT IS SURFACE FORMING BOUNDARY OF BRICK OR STONE IN DIRECTION TRANSVERSE TO FACE OR BED.



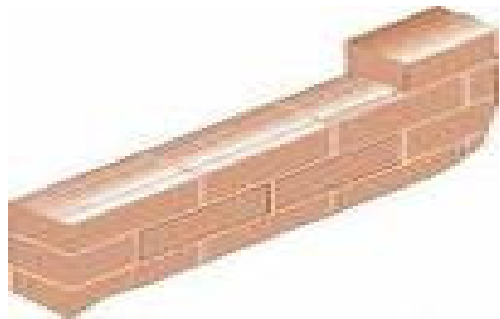
JOINT

The junction of adjacent unit of brick or stone is known as joint.



BED JOINT

THE JOINT PARALLEL TO BED OF BRICK IS KNOWN AS BED JOINT.



THANK

YOU

